



All you need to know:

PRODUCT
INFORMATION

1

TECHNICAL
INFORMATION

2

COVERAGE GUIDE
& APPLICATION

3-4

Hard Wearing Industrial Metal Roof Coating



What is Advantage® 20 for Metal Roofs?

A single component solvent free Metal Roof coating system for corrosion resistance using a moisture cured anti corrosion hybrid coating, that is damp tolerant during application and is easily recoated. It provides excellent UV and mechanical protection while working with the thermal movement required from temperature changes that are experienced throughout the year.

Why choose Advantage® 20 for Metal Roofs

- ✓ Corrosion resistance that can increase substrate life for many years
- ✓ Damp tolerant during application
- ✓ Solvent, Isocyanate and VOC free
- ✓ Easy re-coating
- ✓ Impact resistant
- ✓ Applied in a single coat
- ✓ No shrinkage on curing
- ✓ Provides minimal trafficking of roof during application
- ✓ Microporous to allow substrate to breath
- ✓ Can be applied at temperatures between 3°C and 60°C
- ✓ Flexible coating with elongation, to cope with thermal movement
- ✓ Long term reliability due to excellent adhesion and UV resistance
- ✓ Minimum weight gain after application
- ✓ High weather and UV resistance for this one coat system
- ✓ UK underwritten insurance

✓ **20 Year System Warranty**

✓ **Supporting Waterproofing & Repair Coating Systems:**
30 Year Metal Roofs, 15 Year Gutters, 15 & 10 Year Cut-Edge Corrosion, 20 Year Asbestos, 15 Year Clear+ Roof Lights

✓ **Full UK Underwritten Insurance** (subject to contractor status)

✓ **Superior Contractor Support Every Step of the Way!**

✓ **Contractor Training & CPDs**



In Liquid Form

Feature:	Result:
Specific Weight:	SG1.1 @ 20°C
Application Temperature:	3°C to 60°C
Light Traffic Time:	Next Day
Skin Time @ 20°C / 65% RH:	2 - 4 Hours
Volume Solids:	100%
VOC:	0 g/Lt - VOC Free
Flash Point:	n/a
Viscosity:	14200/5350

In Cured Form

Feature:	Result:
Overcoatable:	Yes, with itself
Finish:	Sheen
UV Resistance:	Excellent
Wet / Dry Film Thickness:	200 µm
Service Temperature:	-40°C to 80°C
Hardness in Shore A:	Approx. 35
Tensile Strength:	1.5 N/mm ²
Tear Strength:	4 M/mm ²
Elongation at Break:	150 - 160%
Salt Test ISO 9227 5% NaCl @ 35°C:	5000 Hours - Pass

General Information

Feature:	Result:
Shelf Life:	12 months minimum in unopened tins, stored in a cool dry place out of direct sunlight
Coverage:	5m ² per 1L
Pack Sizes:	5 & 15 Litres
Form:	Viscous coloured liquid
Colour:	Goosewing grey - other colours to order
Thinners / Brush Wash:	Flushing thinners - not containing water or white spirit
Airless Sprayer - Typical:	Tip Size: 17 - 19 thou. Pressure: Min. 3600psi (250bar)

Components

- Advantage® Sealant: 290ml Tube
- Advantage® 20 for Metal Roofs: 5L & 15L Tins
- Advantage® Graphene Enhanced Anti-Corrosion Metal Primer: 2.5L Tins



Gridding & Measuring - How Much System Do I Need?

- Thorough preparation at this stage will ensure proper primer and coating coverage.
- When measuring please make sure that roof profiles are considered and added to the surface area accordingly.
- The Advantage® Graphene for Metal Roofs has a theoretical coverage rate of 5m² per 1L.
- As a guide, chalk areas on the roof corresponding to tins, so you can check the right coverage is being applied throughout application.
- It is advisable to use a wet film gauge. The coating is solvent free and has no shrinkage therefore the wet and dry film thickness will be the same. When spraying we advise a loss contingency margin of 30%.
- Remember a low dry film thickness will invalidate your warranty.

Coverage Guide

- Advantage® Graphene enhanced Metal Primer: 4-5m² per 1L.
- Advantage® 20 for Metal Roofs: Theoretical 5m² per 1L.
- When spraying we advise a loss contingency margin of 30%.

Before You Start - Roof Inspection

- Ensure the substrate is structurally sound and stable.
- Remove all loose matter such as moss, lichen or other debris.
- Some previous coatings must be removed, please speak to our technical department for more information.

Preparation & Cleaning

Roof Cleaning:

- Power-wash using 3,000 psi. water pressure minimum or clean surface thoroughly to ST2 standard, you will find this more efficient with a rotary cleaning head.
- All oil, grease and dirt must be removed prior to application.
- Remove stubborn dirt and flaking corrosion using hand tools as required.
- Some previous coatings must be removed, contact our technical department to discuss if in doubt.
- Observe standard decorative practice. Passivate (T-wash) new bare galvanised substrates.
- Check the roof for any remaining contaminants, as these will affect the long term adhesion of the coatings so must be dealt with before proceeding.

Roof Repair:

Once the roof is completely clean:

- Inspect the surface for holes, cracks and damaged areas.
- Make all repairs necessary to the roof surface using the Advantage® Sealant and Speed Patches if required on small holes and cracks.
- Larger holes and cracks may require embedding Alltimes Non-Woven Fleece.
- Tighten all bolts where possible and crop them so they are as short as possible.



Priming

- After preparation work is complete apply one coat of Advantage® Graphene enhanced Metal Primer to all areas of surface rust, cut sheet edges and overlaps to a minimum of 25mm past any corrosion or peeled paint, ensuring the underside is coated where possible.
- Allow 2-4 hours to cure until completely dry (dependent on time of year). Lead surfaces should always be primed.
- Remove all sheet fixing caps if possible and apply Advantage® Metal Primer all over the fixings.
- If cappings are tight and there is no rust stain leaching out, prime the caps to aid adhesion of the coating. Apply with a brush and avoid excessive brushing out. Allow 2-4 hours to cure.

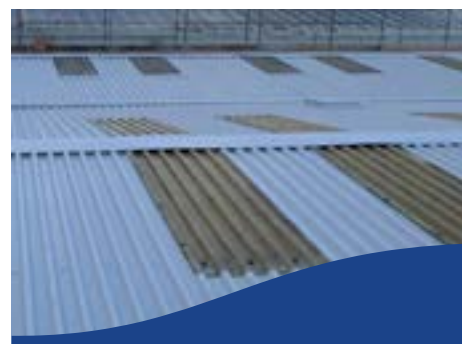
Sheet Ends & Over-Lap Preparation

- Clean and prepare all cut edges and laps to standard, see cut-edge corrosion guide.
- **Laps:** After priming, if moisture is present under laps, dry or blow dry using preferred method first and apply Advantage® Sealant to all over-lapping joints, pointing the cartridge up the slope and into the over-laps to achieve a minimum 5mm of sealant into the joint. Immediately use a brush dipped in the Advantage® 20 for Metal Roofs to tool the sealant into a slight ramp over the lap wet-on-wet. Take to a minimum distance of 25mm beyond the last firm edge point.
- **Edges:** After priming apply Advantage® PLUS to the edge of the sheets and work up well and under the sheets with a brush. Ensure the profile of the edge is not visible through the treatment.
- **Fixings:** After priming apply Advantage® PLUS over and around all the fixings.

Application (Post Priming)

- Mix the solution in the tin using a lowspeed (300 rpm) mixer.
- Ensure Metal Primer is completely dry before applying the top coat
- Once the above (preparation and priming) is completed. Apply Advantage® 20 for Metal Roofs by preferred method, to a DFT of 200 microns minimum.

No responsibility can be taken by the manufacturers where conditions of use are beyond our control. All products should be used in accordance with the manufacturer's instructions. For further information please refer to the application guide and Material Safety Data Sheet. This information and guidance is given in good faith and without prejudice and liability. Technical and Safety Data must be observed. All coverages are given as a guide only, as volumes will vary with profile, porosity and method of application. Loss factors should also be taken into account.



ALLTIMES
COATINGS
EXPERIENCE THE DIFFERENCE IN EVERY COAT

Alltimes Coatings, Units C & D,
Station Road Industrial Estate,
South Woodchester, Stroud,
Gloucestershire. GL5 5EQ. UK

T: 01453 872 850

E: info@alltimescoatings.co.uk

W: www.alltimescoatings.co.uk